

Make the Greenchoice NOW.

To sign up to Greenchoice simply complete this application form and either fax to (02) 6248 3244 or post it to ActewAGL.

Select your Greenchoice plan

Fixed-use options

Greenchoice 5

Greenchoice 10

Greenchoice 15

Greenchoice 20

Greenchoice

Percentage-based options

Greenchoice 10%

Greenchoice 25%

Greenchoice 50%

Greenchoice 100% Wind

Greenchoice 200%

The cost for each plan is 7.5¢/kwh. The cost for the Greenchoice 200% will be calculated based on twice your total quarterly electricity usage.

Yes, the cost for Greenchoice is in addition to your normal charges for electricity – but then, what's the earth worth?

Name _____

Address _____

Postcode _____

Phone _____

**Or join online at
greenchoice.com.au or call
13 14 93**

What's the earth worth?

**Call 13 14 93
or visit greenchoice.com.au**

greenchoice
What's the earth worth?

GreenPower
Accredited Renewable Energy

ActewAGL
Always.

The Greenchoice cost is separate from and in addition to your electricity bill. Unit cost is subject to change. The cost for Greenchoice will commence from the date your application is received, unless a 10-day cooling off period applies under a Bundle Agreement or negotiated contract. You may withdraw from Greenchoice at any time without penalty unless a Greenchoice plan has been included in a Bundle Agreement. All charges are GST inclusive unless otherwise stated. ActewAGL Retail ABN 46 221 314 841. Printed on recycled paper.

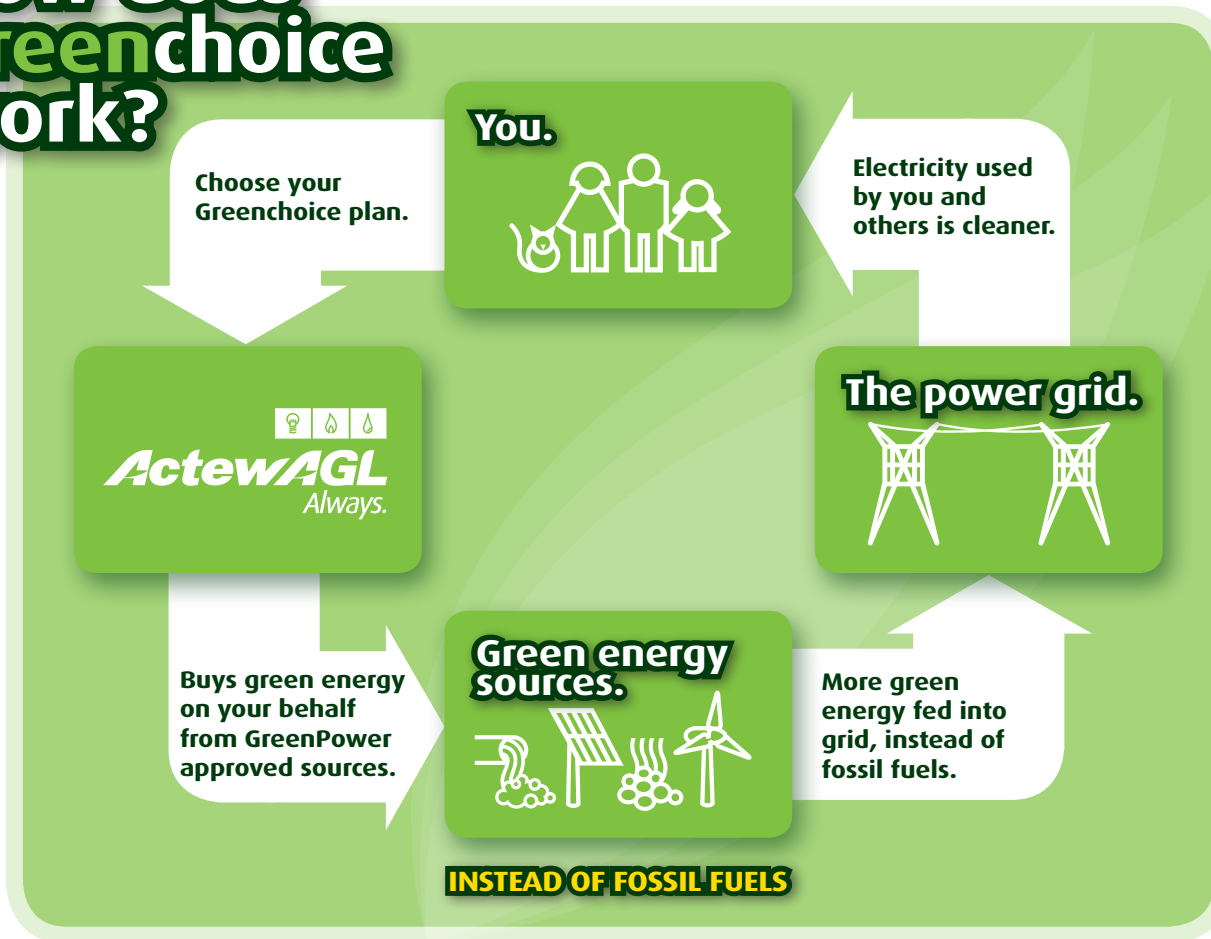
AA004/10/20 86764270

The power of renewable energy.



greenchoice
What's the earth worth?

How does Greenchoice work?



You don't need extra powerlines or installation.

Your electricity is supplied by **ActewAGL**, the same as before. It just means we can buy more electricity from renewable sources, like windpower, biomass, mini-hydro and solar. So the overall result is fewer greenhouse gas emissions created from electricity generation from your home, compared to Greenchoice not being purchased at all.

Do I have to be an ActewAGL customer to have Greenchoice?

No, fixed use plans are available to anyone, anywhere in Australia. **ActewAGL** will send you a separate invoice each quarter for your Greenchoice plan. There are special plans for businesses too.

The cost for Greenchoice is separate from and in addition to your normal electricity bill.

No stamp required if posted in Australia



Greenchoice

Reply Paid 366

CANBERRA ACT 2601

Delivery address:
PO Box 250
CANBERRA ACT 2608

**You already
make a lot of
green choices.
It's worth
making one
more.**



Chances are you're already helping the environment by recycling and using cloth bags at the supermarket. So isn't it worth taking the next step?

When you opt for accredited GreenPower through **ActewAGL's** Greenchoice program, the extra amount you pay each day is used to purchase electricity generated from renewable sources like mini-hydro, wind power and biomass.

Depending on the plan you choose, we'll purchase a certain amount of renewable energy on your behalf. This can be a percentage of what you use, or fixed amount each day. In either case, that amount of new renewable energy is added to the electricity grid on your behalf. This helps to reduce greenhouse gas emissions associated with the generation of electricity from fossil fuels.

**The tick tells
the story**

 **GreenPower**[®]
Accredited Renewable Energy

Unlike some green energy programs, with Greenchoice all of the green energy we purchase on your behalf comes from government-accredited GreenPower generators (generators built after 1 January 1997). This helps drive continued investment in new renewable energy projects.

The **GreenPower** 'tick' is your assurance that Greenchoice is accredited by the government's National GreenPower Accreditation Program, and guarantees that Greenchoice energy comes from government-approved renewable energy sources.



Two ways to go green.



Fixed-use option.

You can ask us to buy a fixed amount of green energy on your behalf each day. This way, **you know exactly how much you will pay each quarter for Greenchoice, regardless of your total electricity use.**

As a guide, a three-bedroom home uses 10-30kWh of electricity per day. There are four plans to choose from under this option. You can purchase more than 20kWh per day if you wish.

Fixed-use option

	Greenchoice 5	Greenchoice 10	Greenchoice 15	Greenchoice 20
Daily purchase	5kWh	10kWh	15kWh	20kWh
Yearly purchase	1825kWh	3650kWh	5475kWh	7300kWh
Unit cost*	7.5¢/kWh	7.5¢/kWh	7.5¢/kWh	7.5¢/kWh
Daily cost	37.5¢	75¢	\$1.13	\$1.50
Tonnes of greenhouse gas you save each year [^]	1.95 tonnes	3.90 tonnes	5.85 tonnes	7.81 tonnes
Equivalent number of cars off the road each year [†]	0.43	0.86	1.30	1.73
GreenPower accreditation [‡]				

Percentage-based option.

This option means you choose what percentage of your electricity will be displaced by green sources.

In this case, the amount you pay for Greenchoice will vary each quarter, depending on your total electricity use.

Percentage-based option

	Greenchoice 10%	Greenchoice 25%	Greenchoice 50%	Greenchoice 100% wind	Greenchoice 200%
% of your electricity usage displaced by renewable sources	10%	25%	50%	100%	200%
Unit cost*	7.5¢/kWh	7.5¢/kWh	7.5¢/kWh	7.5¢/kWh	7.5¢/kWh [#]
Average daily cost [†] (guide only)	14¢	34¢	67¢	\$1.33	\$2.66
Tonnes of greenhouse gas you save each year [^]	0.69 tonnes	1.73 tonnes	3.46 tonnes	6.92 tonnes	13.84 tonnes
Equivalent number of cars off the road each year [†]	0.15	0.38	0.76	1.53	3.07
GreenPower accreditation					

* Unit cost is subject to change.

[^] Based on current NSW/ACT full fuel emissions factor as published in the National Greenhouse Accounts (NGA) Factors – June 2009, Department of Climate Change and Energy Efficiency.

[†] Based on figures from the Australian National University that the average Australian car emits 4.5 tonnes of greenhouse gas annually.

[#] Based on the national average residential electricity consumption of 6,470kWh per year, as provided by GreenPower.